

- 1 Follow the procedure on page 6-2 to display the Administrator Setting Menu Screen.
- 2 Press [01 System Setting], [05 Expert Adjustment], [07 Quality Adjustment], and [04 Stabilization Adj. Setting] in sequence.  
The Stabilization Adj. Setting Screen will be displayed.
- 3 Select either [Speed] or [Stability] on the right side of [Copy Job] to give priority in output.  
Select either [Speed] or [Stability] on the right side of [Printer Job] to give priority in output.  
Selection can be made individually for [Copy Job] and [Printer Job].
- 4 When selecting the image quality stability, the correction operation can be customized for that job.  
Select one of the desired frequency level from [-2] to [+2] for each of [Gamma Correction] and [Maximum Density Correction].  
For [Gamma Correction], you can also select [None].
- 5 Press [OK] to complete the setting.  
→ To cancel the change, press [Cancel]. In either case, the Quality Adjustment Menu Screen will be restored.

### 6.11.32 [05 Expert Adjustment] - [07 Quality Adjustment] - [05 Custom Screen]

Select a screen type to be used for each of line screens (Line 1, Line 2), dot screens (Dot 1, Dot 2), and Stochastic.

The line screens and dot screens available to select a screen type here are those allowed in the User Setting, accessed from [Image Quality Setting] - [01 Screen] on the menu. If [Restrict] is specified for Line 1, Line 2, or Dot 2, selection for those screens will be unavailable.

Stochastic, however, is always available.

Each screen type has a feature as described below. Use this information as a guide to select an appropriate one.

#### Line screen (Line 1, Line 2)

| Type     | Description                                                                                                                                                                                 |
|----------|---------------------------------------------------------------------------------------------------------------------------------------------------------------------------------------------|
| Line 200 | Uses fine lines to reproduce an image. Suitable for office documents including graphs.                                                                                                      |
| Line 190 | Uses dots and lines to reproduce an image. Suitable for office documents including photos.                                                                                                  |
| Line 180 | Uses lines to reproduce an image. Suitable for office documents.                                                                                                                            |
| Line 150 | Uses lines to reproduce an image. Suitable for black-and-white printing.                                                                                                                    |
| Wave     | Uses large wave lines to reproduce an image. This screen type can help prevent forgery, as images deteriorate when color-printed from the original previously reproduced using this screen. |

## Dot screen (Dot 1, Dot 2)

| Type    | Description                                                                                                    |
|---------|----------------------------------------------------------------------------------------------------------------|
| Dot 270 | Uses ultrafine dots to reproduce an image. Suitable for printing maps including fine patterns and small texts. |
| Dot 190 | Uses fine dots to reproduce an image. Suitable for printing catalogs.                                          |
| Dot 170 | Uses dots to reproduce an image. Suitable for printing color photos.                                           |
| Dot 130 | Uses dots to reproduce an image. Suitable for printing black-and-white photos.                                 |
| Dot 095 | Uses dots to reproduce an image. Suitable for printing posters.                                                |

## Stochastic

| Type | Description                                                                                                             |
|------|-------------------------------------------------------------------------------------------------------------------------|
| ED 1 | Uses aperiodic (coarse) dots to reproduce an image. Suitable for normal copying.                                        |
| ED 2 | Uses aperiodic dots to reproduce an image. Black texts can be finely reproduced. Suitable for copying office documents. |
| ED 3 | Uses aperiodic dots to reproduce an image. Black texts can be finely reproduced. Suitable for copying office documents. |
| FM 1 | Uses aperiodic dots to reproduce an image. Suitable for printing photos of clothes or textiles finely designed.         |
| FM 2 | Uses aperiodic dots to reproduce an image. Suitable for printing maps.                                                  |

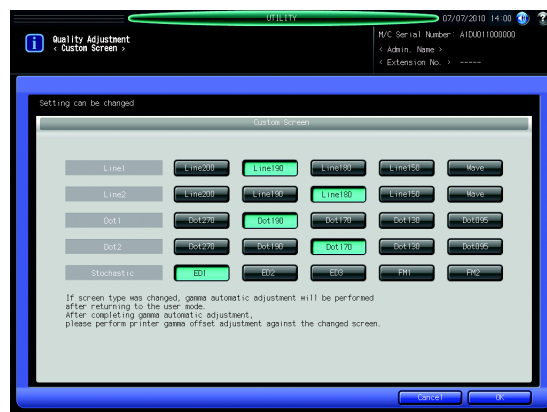
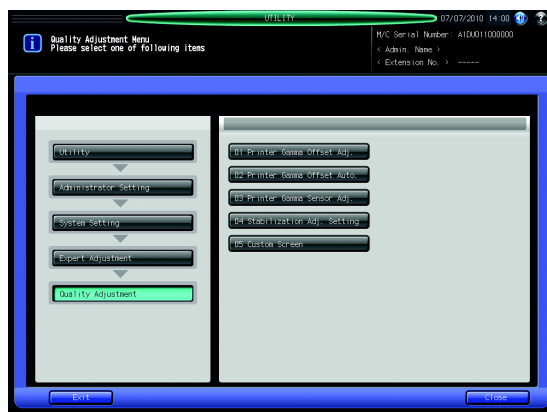
### NOTICE

The machine will automatically start the Gamma Adjustment after you change the screen type and exit the Utility mode. When the Gamma Adjustment is completed, please proceed to the Printer Gamma Offset Adjustment for the changed screen type.



### Reference

See page 6-81 for details of the Printer Gamma Offset Adjustment.



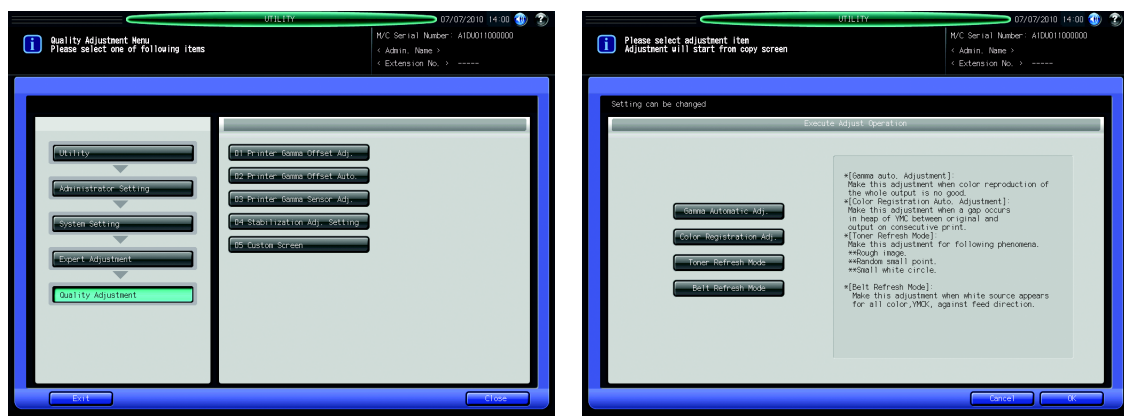
- 1 Follow the procedure on page 6-2 to display the Administrator Setting Menu Screen.
- 2 Press [01 System Setting], [05 Expert Adjustment], [07 Quality Adjustment], and [05 Custom Screen] in sequence.  
The Custom Screen Setting Screen will be displayed.
- 3 Select the desired screen type according to the print type for each.
- 4 Press [OK] to complete the setting.  
→ To cancel the change, press [Cancel]. In either case, the Quality Adjustment Menu Screen will be restored.

- 5 If you have changed the screen type, press [Exit] on the Quality Adjustment Menu Screen to return to the Machine Screen.  
The Gamma Adjustment will start automatically.
- 6 When the Gamma Adjustment is completed, reenter the Administrator Setting mode and proceed to the Printer Gamma Offset Adjustment for the changed screen type.

### 6.11.33 [05 Expert Adjustment] - [08 Execute Adjust Operation]

Execute adjustment operations of [Gamma Automatic Adjustment], [Color Registration Auto Adj.], [Toner Refresh Mode], and [Belt Refresh Mode].

This operation is the same as that in [Adjustment] - [03 Execute Adjust Operation] accessed from the Machine Screen.



- 1 Follow the procedure on page 6-2 to display the Administrator Setting Menu Screen.
- 2 Press [01 System Setting], [05 Expert Adjustment], and [08 Execute Adjust Operation] in sequence.  
The Execute Adjust Operation Screen will be displayed.
- 3 Select the desired adjustment.
- 4 Press [OK] to execute the selected adjustment.  
→ To cancel the operation, press [Cancel]. In either case, the Expert Adjustment Menu Screen will be restored.

### 6.11.34 [06 List/Counter]

Use this function to print out the list selected from the following items.

- Mode Memory List: Programed contents of Mode Memory
- User Management List: Settings made by users
- Use Management List: Information to be managed by user authentication/account track
- Font Pattern List: Font patterns used in the machine
- Audit Log Report: Audit logs

Also, collectively save the list and report mentioned above on the USB flash drive connected to the USB port.